



EV Charging Team
Highways and Transportation
Tower Hamlets Council
Town Hall
160 Whitechapel Road
London
E1 1BJ

Email: EVCharging@towerhamlets.gov.uk

March 18th 2026

Dear Resident,

New rapid charging point proposed on Barnet Grove

This document outlines our proposals for the introduction of an electric vehicle charging point and associated electric vehicle only bay. You can respond to this consultation online at:

<https://talk.towerhamlets.gov.uk/en-GB/projects/lbth-rapid-charger-project>

Alternatively, you can email the address above, quoting reference 'LBTH Rapid Chargers' and make clear the locations(s) to which the representation refers.

The closing date for the return of the questionnaire is 15th April 2026.

Background

Tower Hamlets Council is looking to expand its electric vehicle charging network to further support the adoption of low emission electric vehicles and reduce air pollution across the borough. The demand for Electric Vehicle (EV) in Tower Hamlets is very high and continue to grow annually. To meet the demands of this growth the council is working to add more charging points to its existing network.

What is being proposed

We are proposing to introduce a double charging point on Barnet Grove which will serve a single dedicated bay where only electric vehicles will only be able to park if they are charging.

Please see attached, a plan of the proposed location and an example of what the electric vehicle charge point will look like.

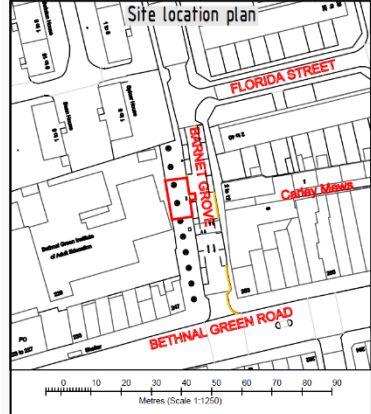
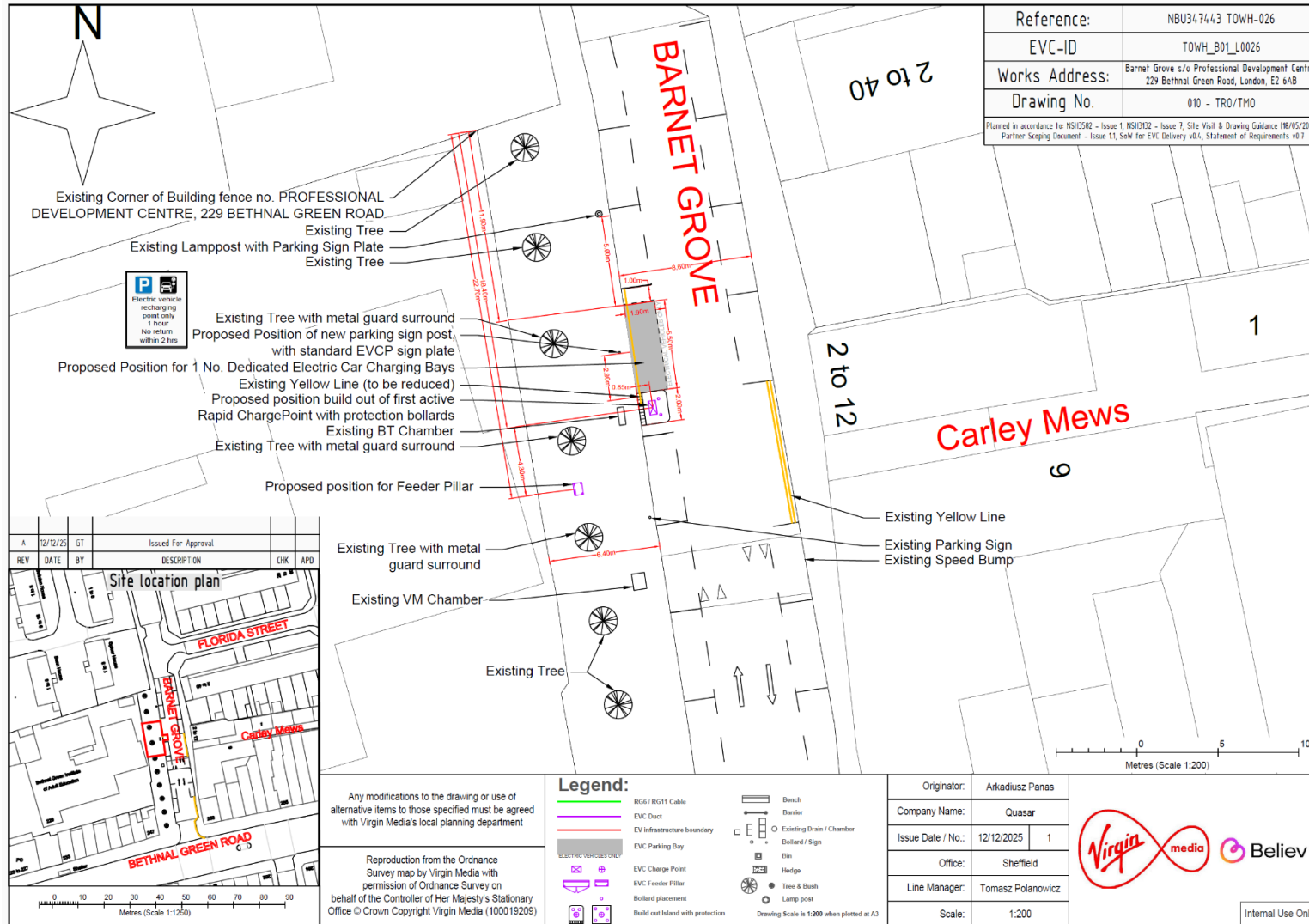
Yours sincerely,

Tower Hamlets Council

Example Charging Point



Proposed Plan



Any modifications to the drawing or use of alternative items to those specified must be agreed with Virgin Media's local planning department

Reproduction from the Ordnance Survey map by Virgin Media with permission of Ordnance Survey on behalf of the Controller of Her Majesty's Stationary Office © Crown Copyright Virgin Media (100019209)

Legend:

- RG6 / RG11 Cable
- EVC Duct
- EV Infrastructure boundary
- EVC Parking Bay
- EVC Charge Point
- EVC Feeder Pillar
- Bollard placement
- Build out Island with protection
- Bench
- Barrier
- Existing Drain / Chamber
- Bollard / Sign
- Bin
- Hedge
- Tree & Bush
- Lamp post

Drawing Scale is 1:200 when plotted at A3



Internal Use Only